

jay mata te

BHAWANI

Gayatri

PALACE
Srikoruan, Cuttack



BHAWANI *Gayatri* PALACE

Bhawani Gayatri Palace, an affordable residential project in the developing area of Srikoruan, Cuttack, with immense convenience and a blissful life. It is set on the banks of Kathajodi river with a **river view**. Yet it is minutes away from the city's commercial and educational establishments like Schools, Hospitals & Cuttack Railway Station. Experience a heightened sense of exclusivity desired by the privileged few.

A home that devotes attention to the minutest of details, all for your comfort. The living spaces at **Bhawani Gayatri Palace** offer 1 & 2 BHK layouts in four floors. The apartments have been planned such that they offer optimum privacy. The living spaces exude warmth and gratifying functionality.

The strategic location and thoughtful planning are the key attributes which sets it apart from most of the residential development in the city in present times.



*A house is made of bricks and beams,
A house is made of hopes and dreams,*



Amenities



24 hr
security



24 hr water supply
with deep bore &
overhead tank



Gymnasium
(Open & Covered)



Vastu
complied



Temple



Sewage Treatment
Plant (STP)



Car Parking



Intercom
Facility



CCTV surveillance in
main gate & parking



Power backup lift &
common area



Sit out area



App based
security system



CMC
approved



RERA
approved

Nearer to Everything



| | | |
|-----------------------------|---|--------|
| Highway | : | 5 min |
| Badambadi bus stand | : | 15 min |
| Bhubaneswar Airport | : | 30 min |
| Cuttack Railway station | : | 15 min |
| SCB Medical | : | 15 min |
| Other Healthcare Facilities | : | 15 min |

You are nearer to the new indoor stadium at Gopalpur



BHAWANI Gayatri PALACE

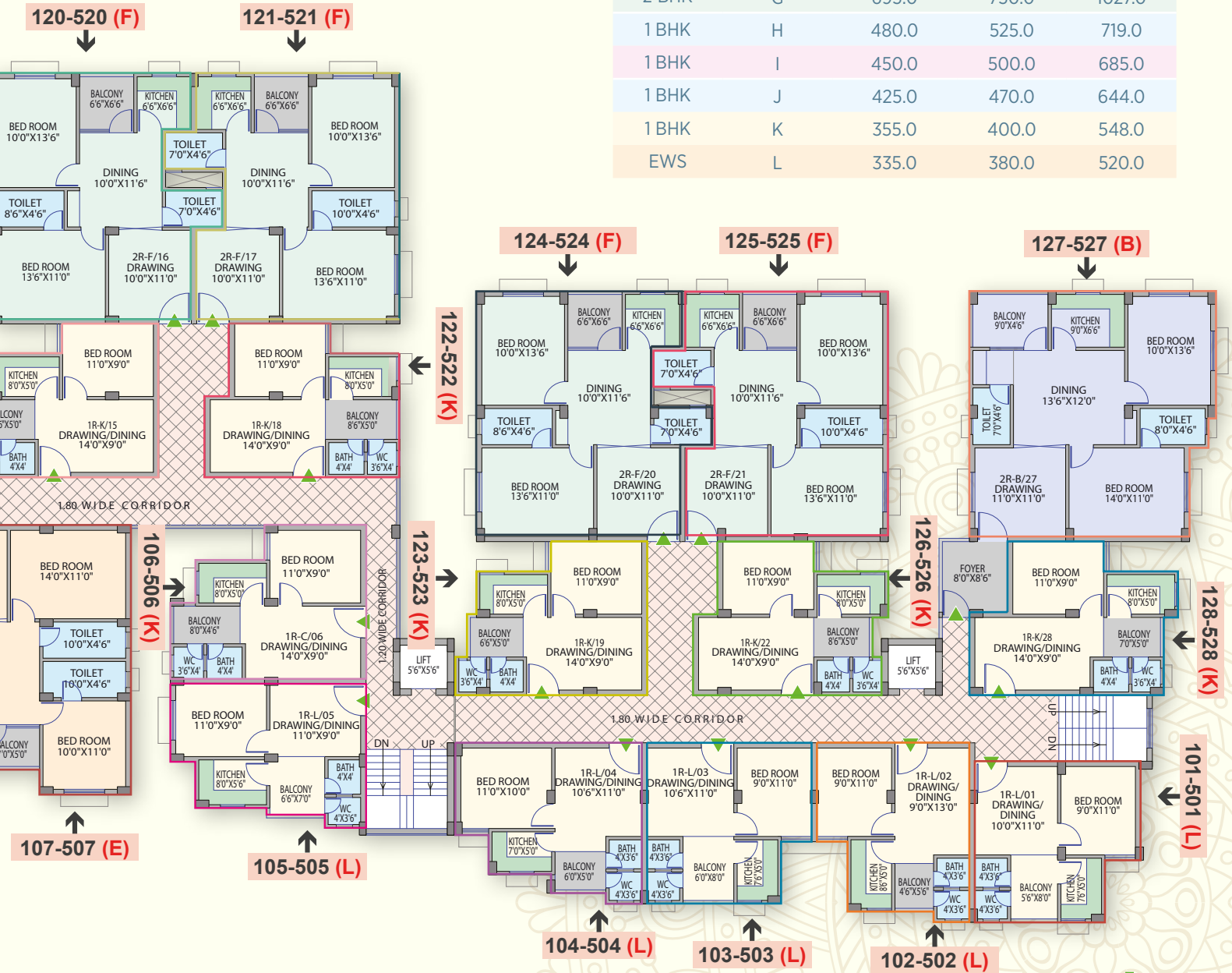
Floor Plan



1st Floor : Flat no ▶ 101-128
 2nd Floor : Flat no ▶ 201-228
 3rd Floor : Flat no ▶ 301-328

in SFT.

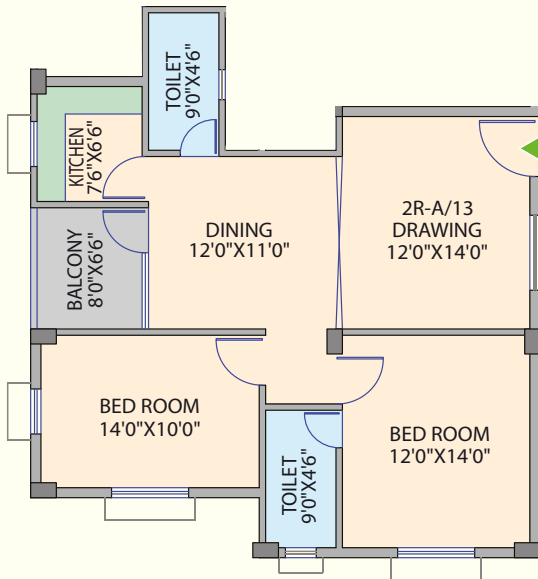
| Flat | Type | Carpet Area | BUA | SBA |
|-------|------|-------------|-------|--------|
| 2 BHK | A | 855.0 | 925.0 | 1267.0 |
| 2 BHK | B | 835.0 | 900.0 | 1233.0 |
| 2 BHK | C | 820.0 | 875.0 | 1198.0 |
| 2 BHK | D | 785.0 | 850.0 | 1164.0 |
| 2 BHK | E | 775.0 | 835.0 | 1144.0 |
| 2 BHK | F | 710.0 | 765.0 | 1048.0 |
| 2 BHK | G | 695.0 | 750.0 | 1027.0 |
| 1 BHK | H | 480.0 | 525.0 | 719.0 |
| 1 BHK | I | 450.0 | 500.0 | 685.0 |
| 1 BHK | J | 425.0 | 470.0 | 644.0 |
| 1 BHK | K | 355.0 | 400.0 | 548.0 |
| EWS | L | 335.0 | 380.0 | 520.0 |



4th Floor : Flat no ▶ 401-428
5th Floor : Flat no ▶ 501-528

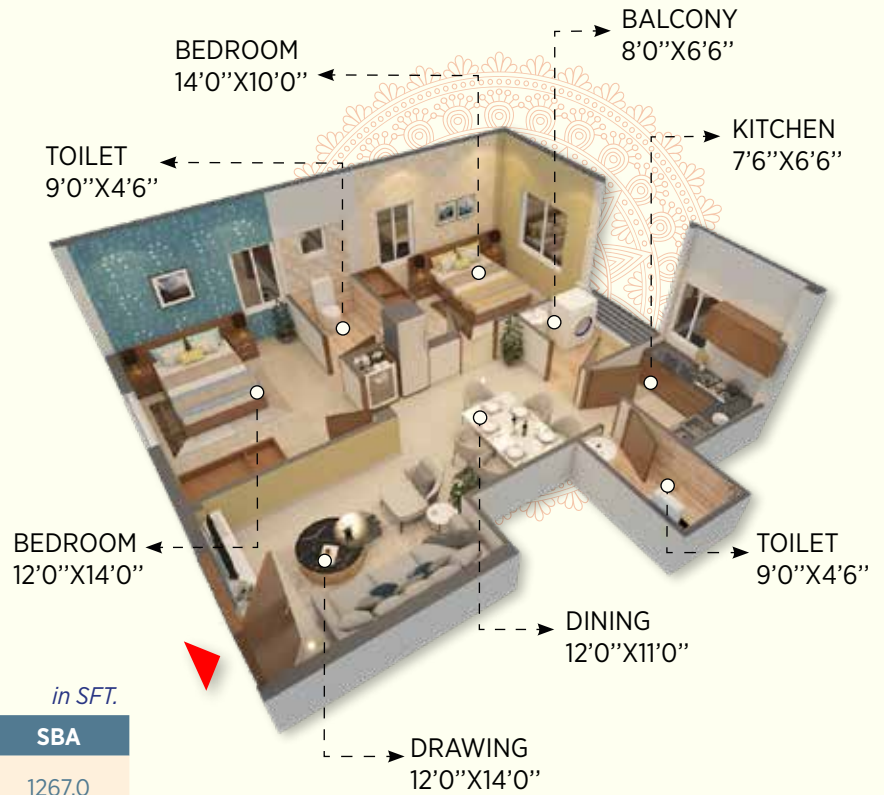


A

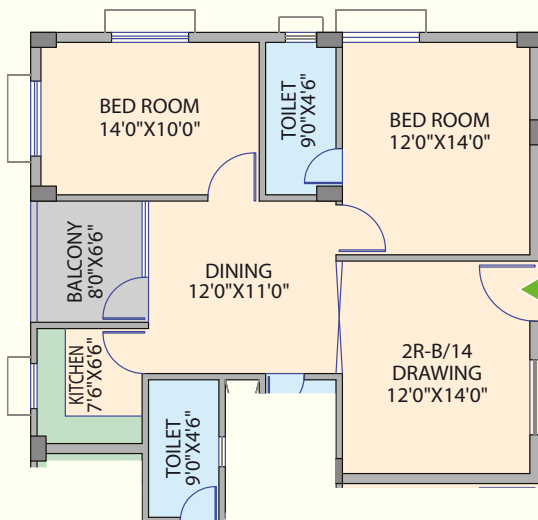


in SFT.

| Flat | Type | Carpet Area | BUA | SBA |
|-------|------|-------------|-------|--------|
| 2 BHK | A | 855.0 | 925.0 | 1267.0 |

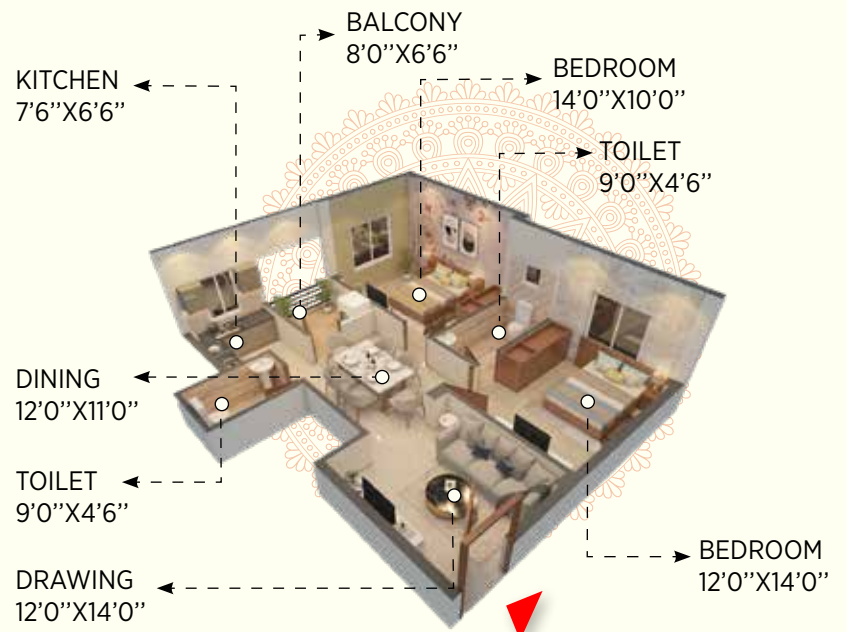


B

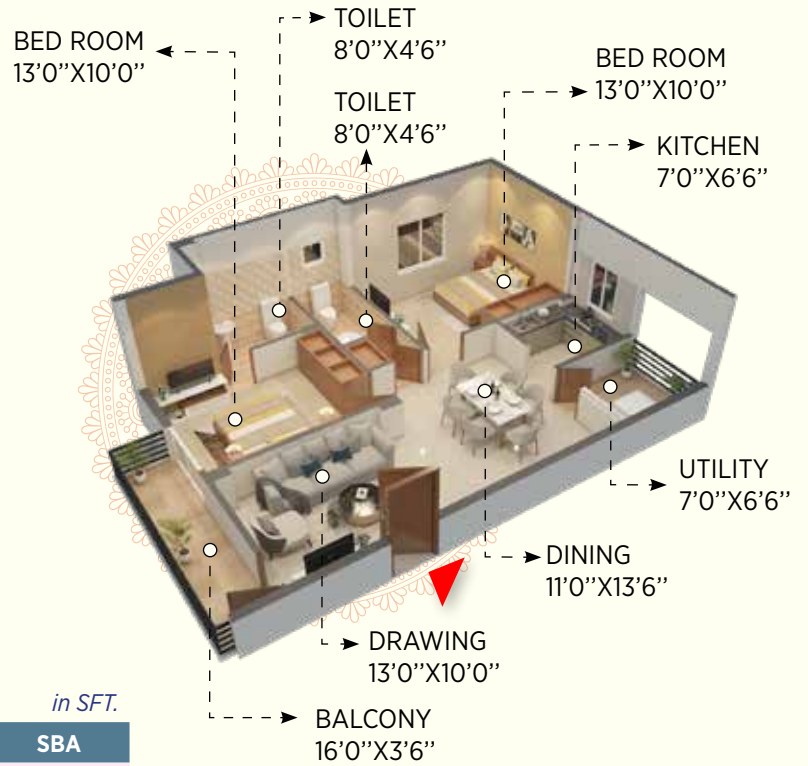
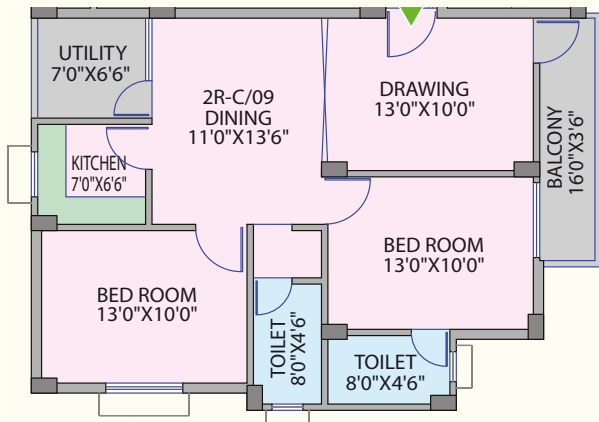


in SFT.

| Flat | Type | Carpet Area | BUA | SBA |
|-------|------|-------------|-------|--------|
| 2 BHK | B | 835.0 | 900.0 | 1233.0 |



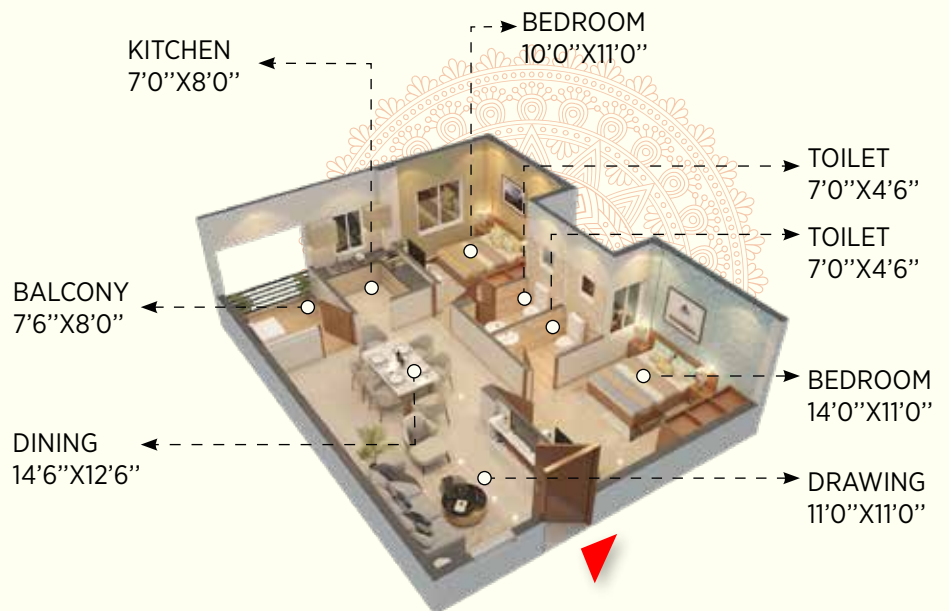
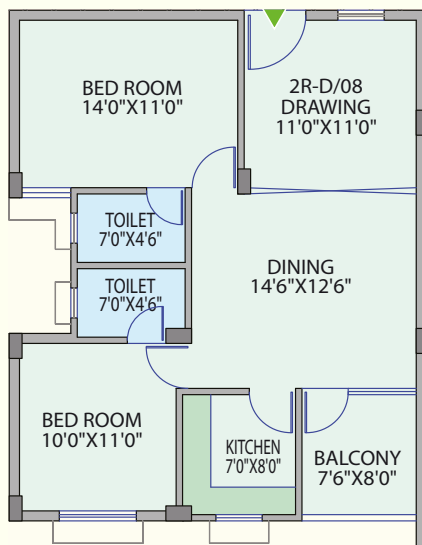
C



in SFT.

| Flat | Type | Carpet Area | BUA | SBA |
|-------|------|-------------|-------|--------|
| 2 BHK | C | 820.0 | 875.0 | 1198.0 |

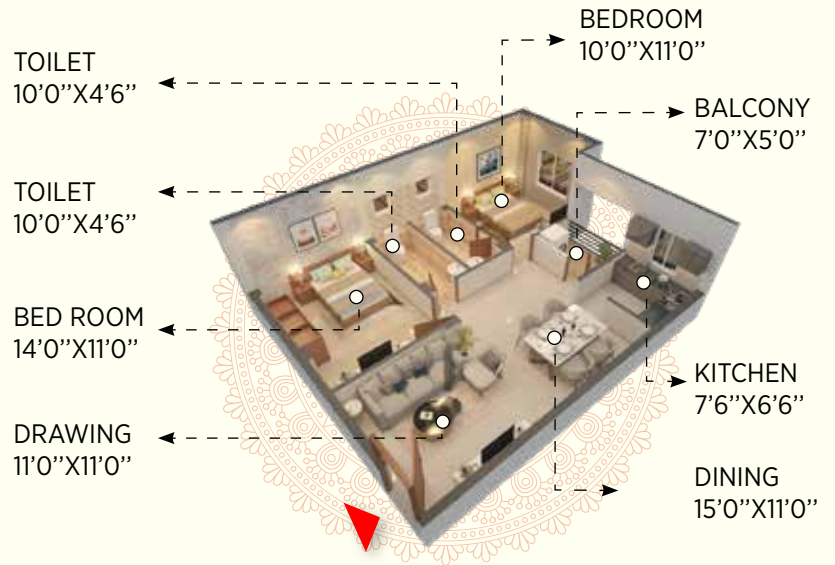
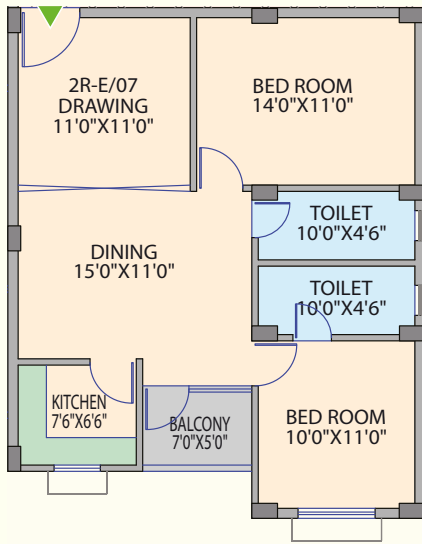
D



in SFT.

| Flat | Type | Carpet Area | BUA | SBA |
|-------|------|-------------|-------|--------|
| 2 BHK | D | 785.0 | 850.0 | 1164.0 |

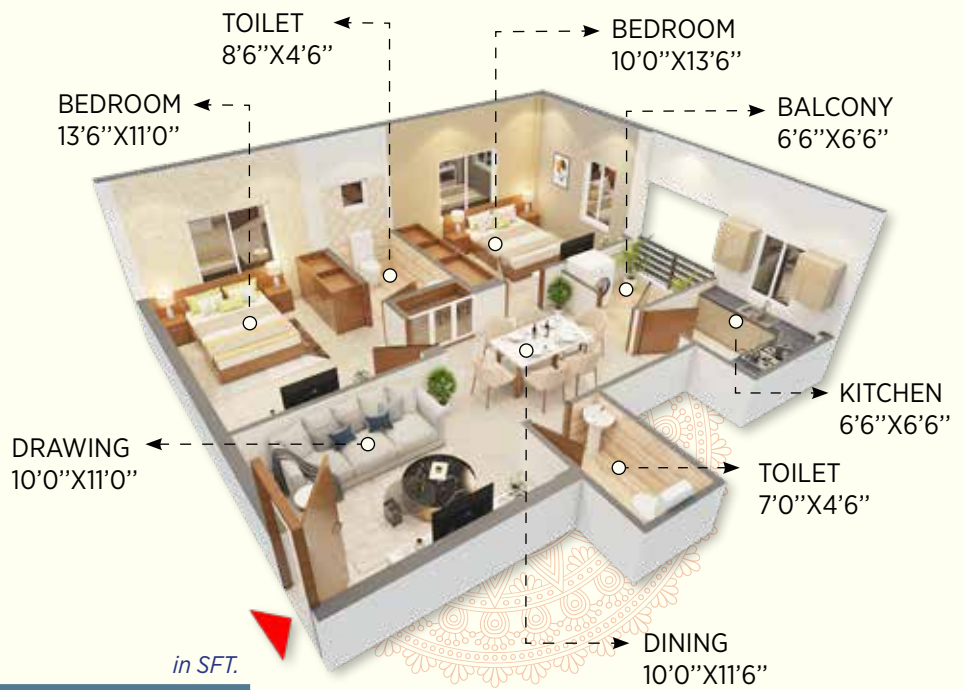
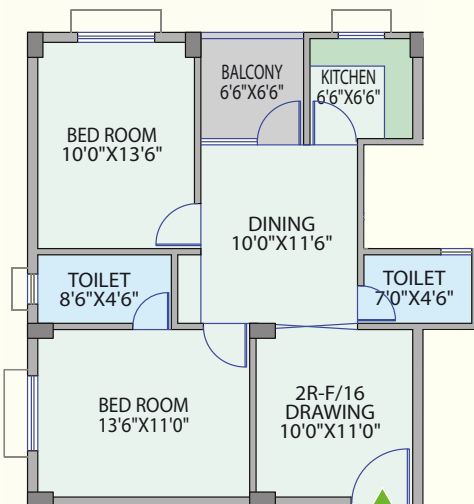
E



in SFT.

| Flat | Type | Carpet Area | BUA | SBA |
|-------|------|-------------|-------|--------|
| 2 BHK | E | 775.0 | 835.0 | 1144.0 |

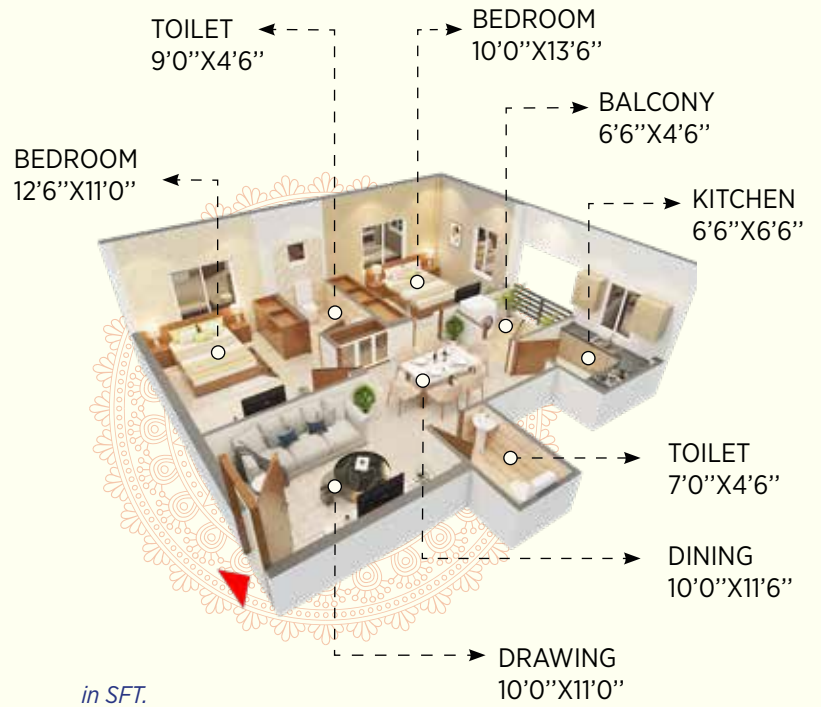
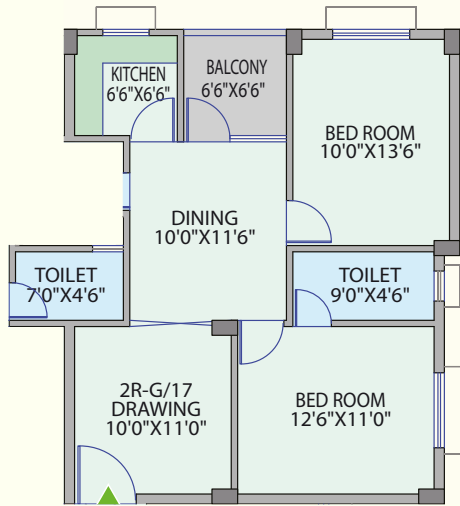
F



in SFT.

| Flat | Type | Carpet Area | BUA | SBA |
|-------|------|-------------|-------|--------|
| 2 BHK | F | 710.0 | 765.0 | 1048.0 |

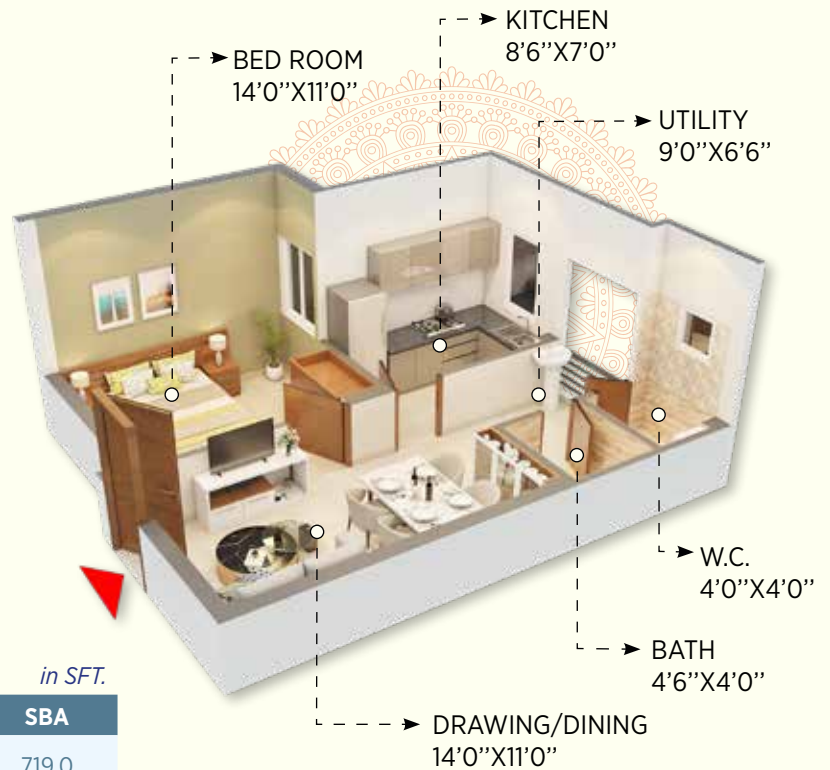
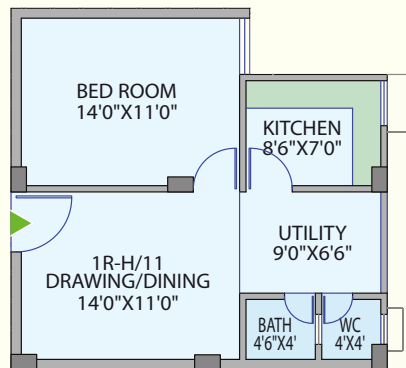
G



in SFT.

| Flat | Type | Carpet Area | BUA | SBA |
|-------|------|-------------|-------|--------|
| 2 BHK | G | 695.0 | 750.0 | 1027.0 |

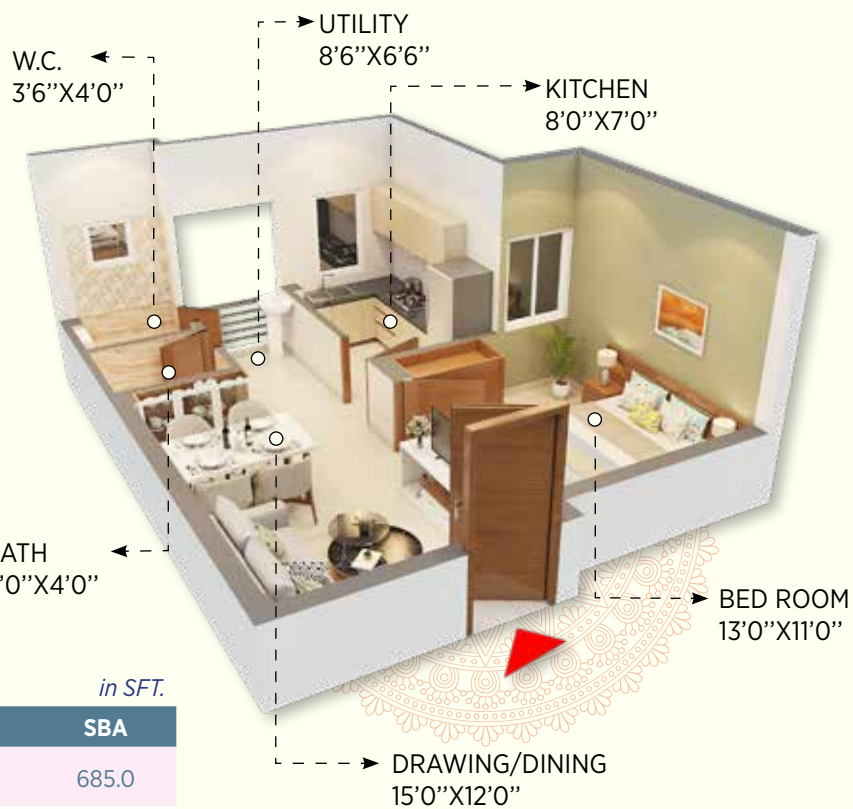
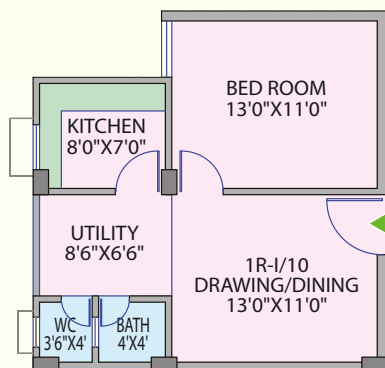
H



in SFT.

| Flat | Type | Carpet Area | BUA | SBA |
|-------|------|-------------|-------|-------|
| 1 BHK | H | 480.0 | 525.0 | 719.0 |

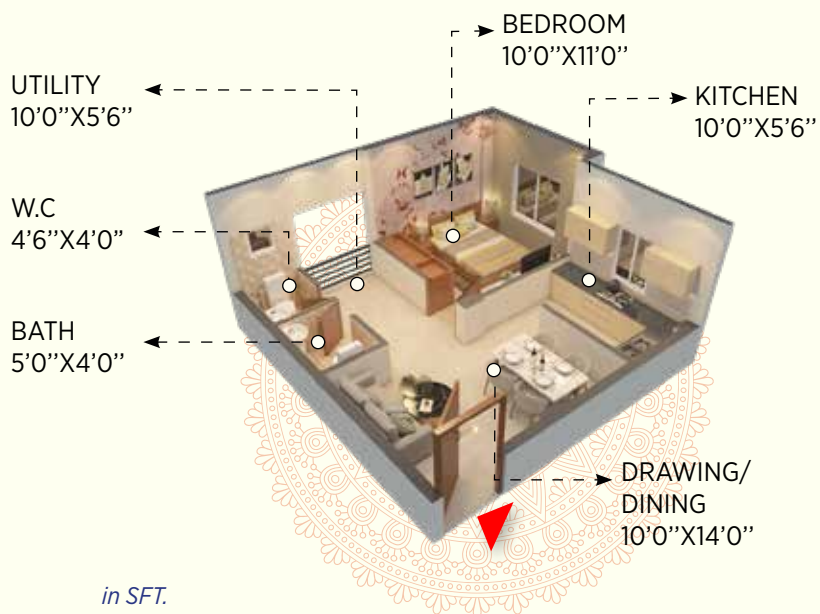
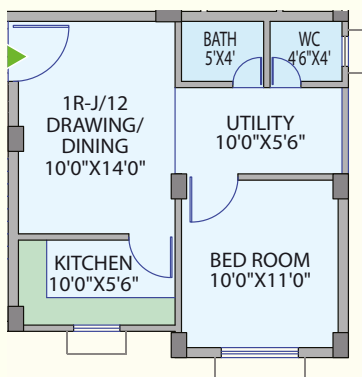
I



in SFT.

| Flat | Type | Carpet Area | BUA | SBA |
|-------|------|-------------|-------|-------|
| 1 BHK | I | 450.0 | 500.0 | 685.0 |

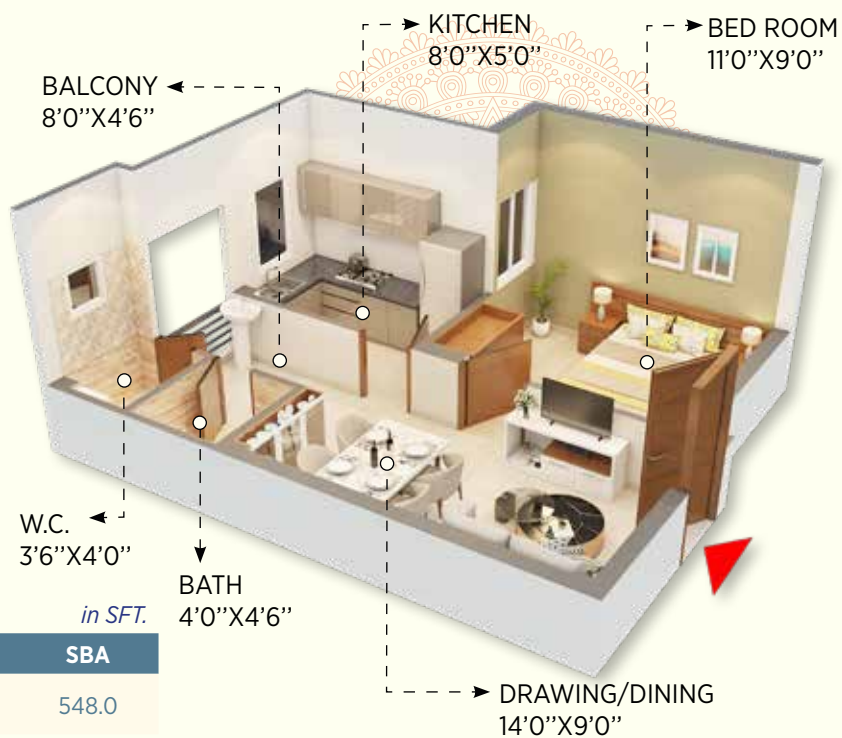
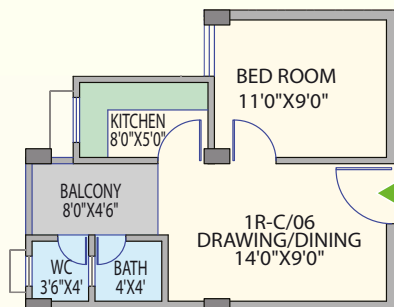
J



in SFT.

| Flat | Type | Carpet Area | BUA | SBA |
|-------|------|-------------|-------|-------|
| 1 BHK | J | 425.0 | 470.0 | 644.0 |

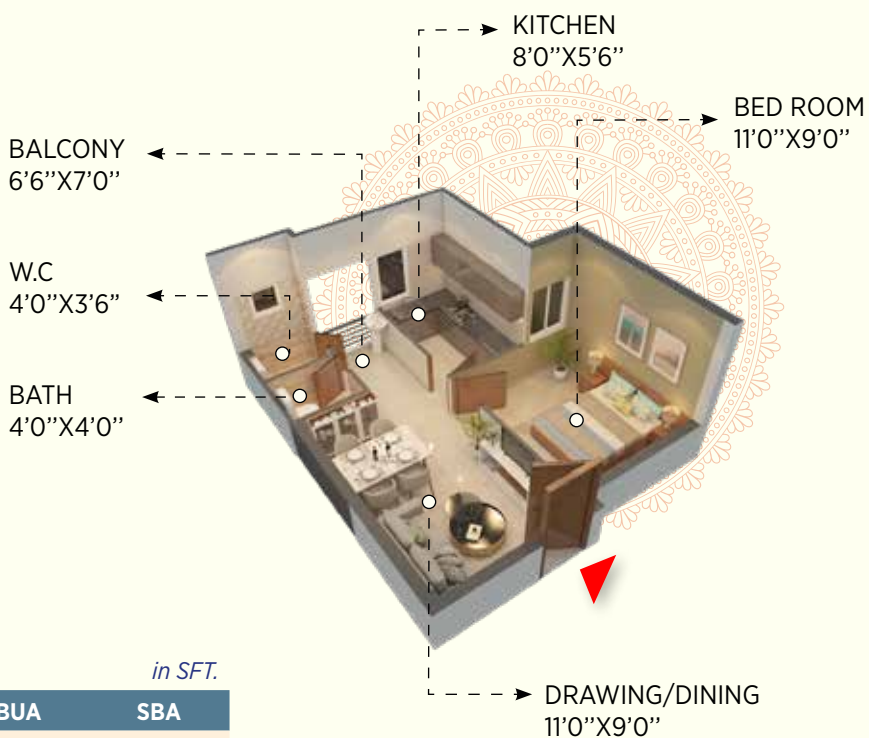
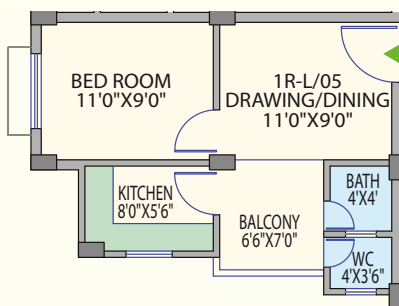
K



| Flat | Type | Carpet Area | BUA | SBA |
|-------|------|-------------|-------|-------|
| 1 BHK | K | 355.0 | 400.0 | 548.0 |

in SFT.

L



| Flat | Type | Carpet Area | BUA | SBA |
|------|------|-------------|-------|-------|
| EWS | L | 335.0 | 380.0 | 520.0 |

in SFT.

Construction Specification

STRUCTURE Foundation & RCC frame structure with TMT Rod

Common Areas **Staircase Railing** : S.S/M.S. railing
Corridor & Staircase : Granite / Tiles

Floor : Vitrified tiles

Staircase : Tiles

Wall : Putty finish & two coat color

Lift facia : Tiles

Drawing/ Dining **Door Frame** : Wooden / PVC

Main Door : Flush door

Floor : Vitrified tiles

Wall : Putty finish & two coat color

Kitchen Designed to accommodate modular kitchen

Door Frame : Wooden

Doors : Flush doors

Floor : Vitrified tiles

Platform : Wall cladding of tiles upto 2' height above granite platform with S.S. sink and branded C.P. fitting

Wall : Putty finish & two coat color

BedRoom **Door** : Flush Door

Floor : Vitrified tiles

Wall : Putty finish & two coat color

Windows : Aluminum window with MS grill

Toilet **Floor** : Antiskid tiles

Wall : 7' height of tiles, putty finish & two coat color

C.P. Fitting : Branded C.P. & Sanitary fittings.

Electrical Wiring through PVC conduits concealed in walls & ceilings. Light points, fan/ exhaust points, power points, call bell point, TV points. A/C Points in one bedroom. DTH wiring in dining room.







Get your dream house with just a call